

Wood Stove Blower Kit

Installation Instructions (SKU 99000143)

Compatibility

- Cape Cod*
- Evergreen
- Rockport

*** COMPATIBILITY NOTE FOR CAPE COD**

Models produced prior to July, 2015 (Serial Number 1113-002411 or less), have a convection chamber that has gaps to the side of the junction box bracket. This leads to air blowing downwards when the blower is on. To fix this, install part # 250-03654. This kit includes two cover plates and attachment screws to block off this area from airflow.



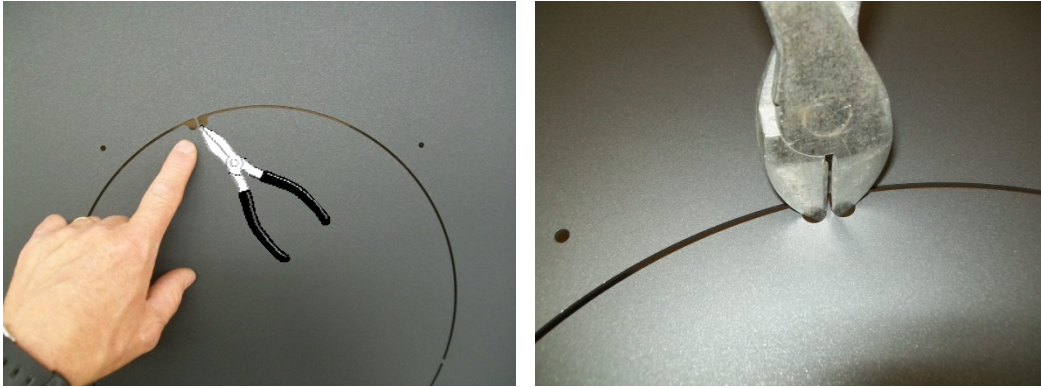
Packing List

- Magnetic Rheostat Assembly
- Convection Blower
- Junction Box Bracket
- Snap Disc Bracket
- Hardware Pack:
 - (4) 10-24 X 5/8" Screws
 - (3) #8 X 3/8" Screws
 - (4) #10 Washers
 - (1) 1/2" Loop Clamp
 - (1) Self drilling screw

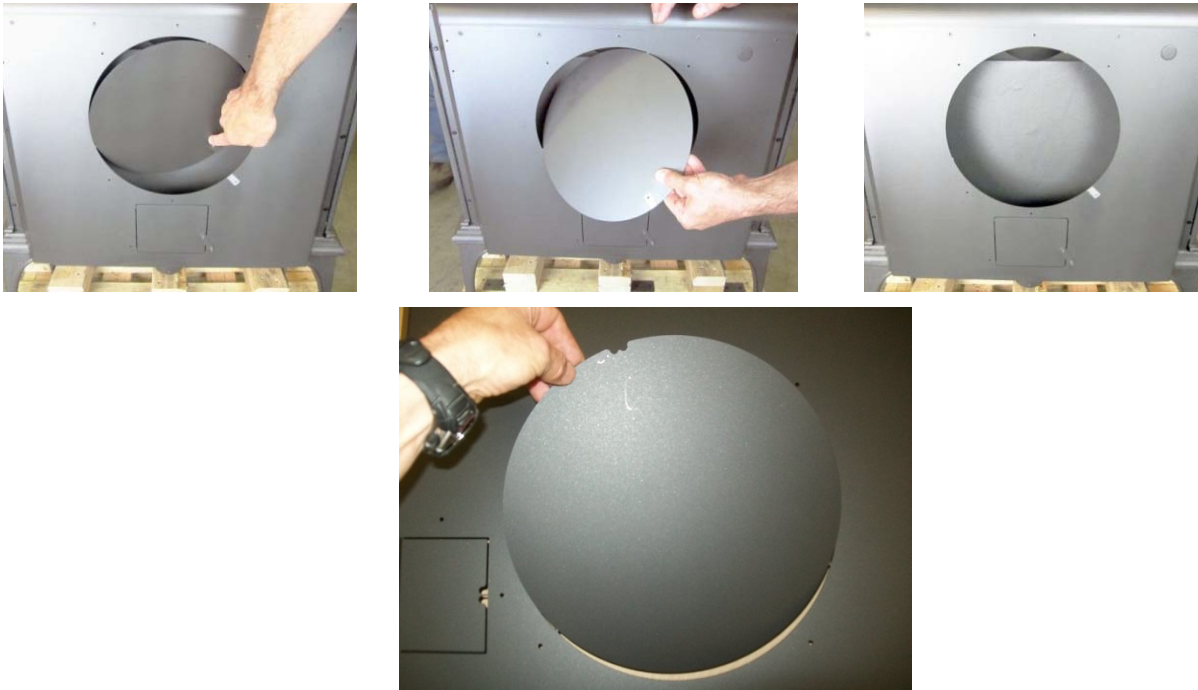


Installation

1. Use wire cutters to remove one of the tabs securing the blower knock-out in place.

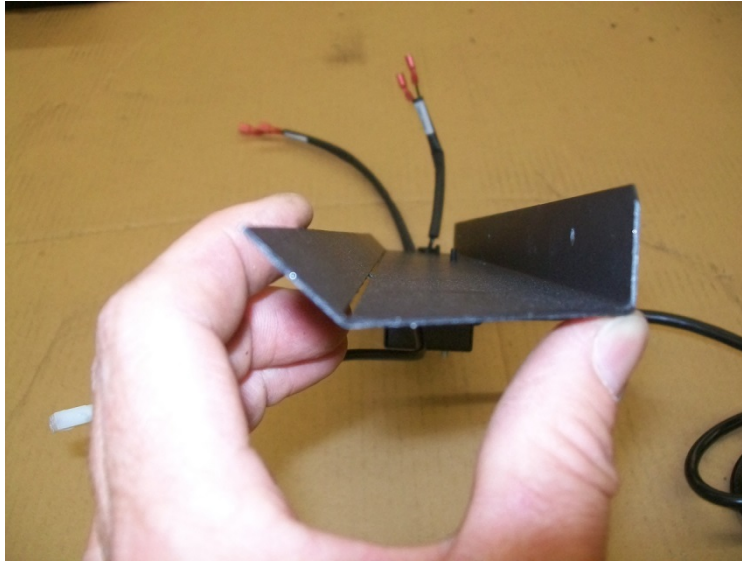


2. Press on opposite sides of the knockout repeatedly to weaken the remaining tabs holding the knock-out in place. Once loose, remove and discard the knock-out.

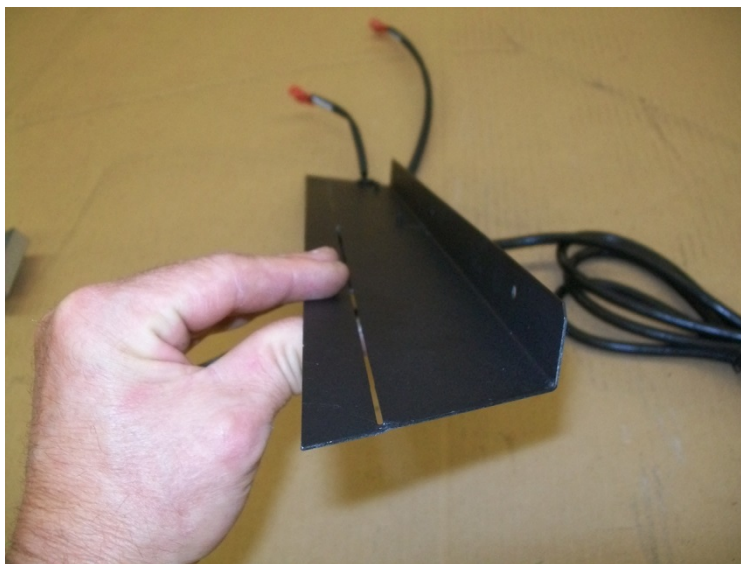


Wood Stove Blower Kit Installation Instructions (SKU 99000143)

3. The junction box bracket is shipped in the Cape Cod / Rockport configuration (note 45° angle). If installing on an Evergreen, bend the 45° angle flat as shown below.



Cape Cod / Rockport Configuration

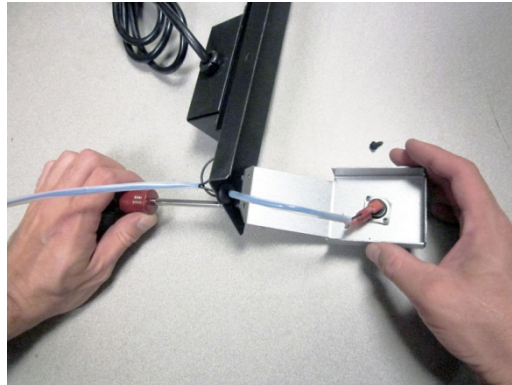


Evergreen Configuration

Wood Stove Blower Kit Installation Instructions (SKU 99000143)

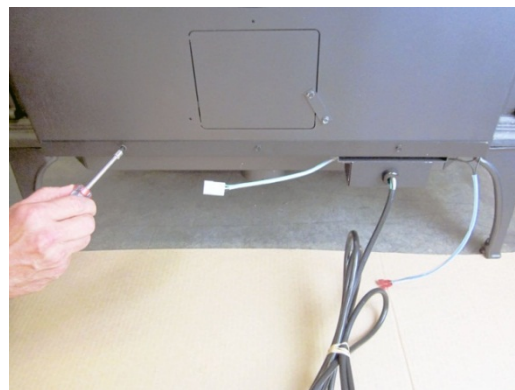
4. Attach the snap disc bracket to the junction box bracket as shown below. The two #8 x 3/8" screws are shipped pre-threaded into the snap-disk bracket.

Note the location and orientation of the snap-disk bracket. It is located on the power cord end of the junction box bracket, and must be attached so the lip of the junction box bracket is positioned as shown in the photo below.



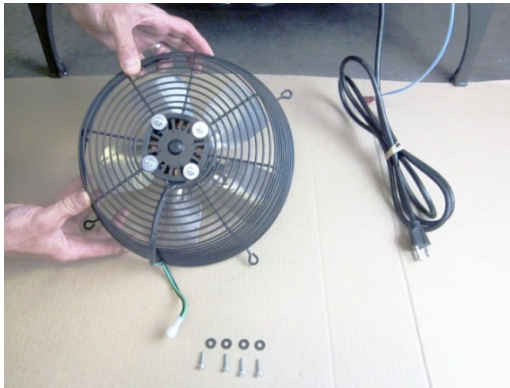
5. Attach the junction box bracket to the bottom rear of the stove with three #8 X 3/8" screws.

NOTE: Make sure the snap disc contacts the back wall of the stove. If it does not, bend the snap disc bracket to ensure proper contact.

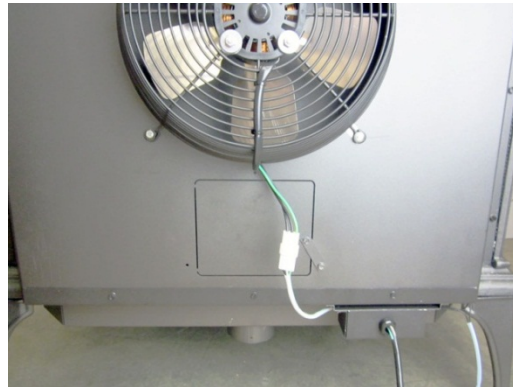
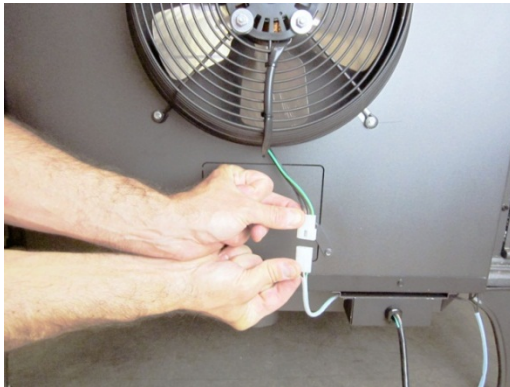


Wood Stove Blower Kit Installation Instructions (SKU 99000143)

6. Attach the blower to the rear of the stove with four 10-24 X 5/8" screws and four #10 washers.



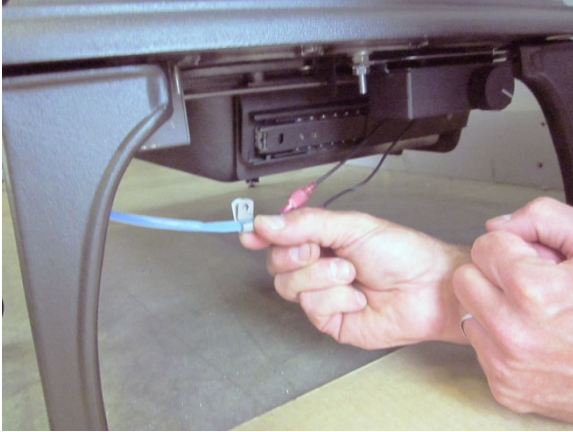
7. Connect the blower wires to the wires from the junction box bracket.



8. Attach the Rheostat to the left underside of the stove behind the pedestal mount or front leg and connect the rheostat wires to the wires marked "Rheostat" coming from the junction box bracket.



9. Place the loop clamp over the rheostat wires.



Cape Cod / Rockport



Evergreen

10. Secure the clamp to the bottom of the stove using the self drilling screw.



Cape Cod / Rockport wire clamp location



Evergreen wire clamp location