



# Driftwood Log Set "B"

## Installation Instructions (sku 94500572)

### Packing List

- Log Set

### Items Required

- ¼" Crushed Glass (see page 9 for quantities):
  - Platinum (94500580)
  - Reflective Bronze (94500581)
  - Cobalt (94500582)

### Compatibility

- 33 DVI
- DVL GSR NB
- 864 HO NB with Diamond-Fyre Burner
- Cypress Stove

### Installation Warnings



The glass must be installed in accordance with this installation manual or instruction sheet. Failure to install the glass correctly may lead to a safety hazard and will void the warranty.



The logs must be installed before placing the glass to prevent sooting.

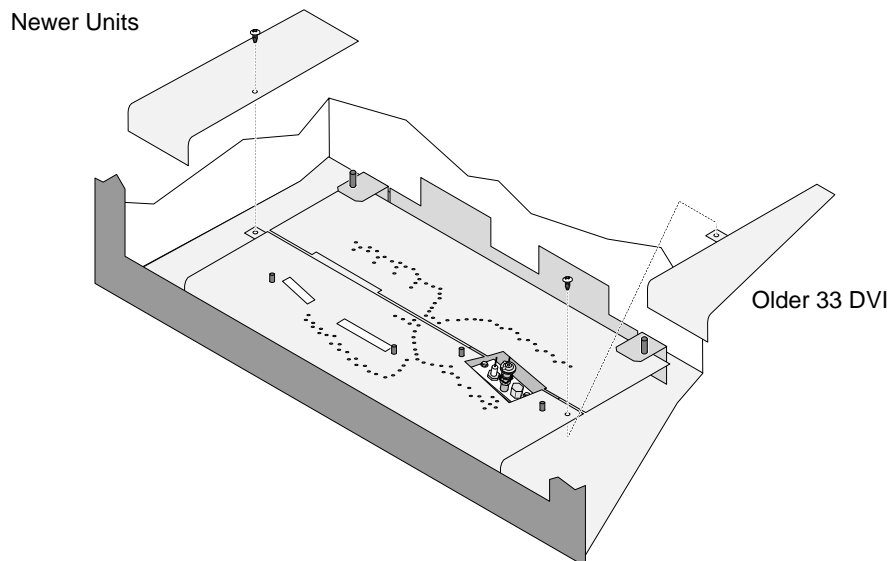
- The logs are fragile, especially after being exposed to heat.
- Make sure the gas control valve is "OFF" and the heater is cool prior to conducting service.
- Failure to position the parts in accordance with these diagrams or failure to use only parts specifically approved with this appliance may result in property damage or personal injury.
- The burner must be correctly positioned before installing the log set. Make sure the burner is fully seated and the pilot is properly aligned. See owner's manual for details on burner removal.

**HINT:** If using propane (LP), convert the appliance before installing the log set.

**HINT:** If using optional firebacks, first make the modifications to the burner (see below). After modifying the burner *install the firebacks then the log set.*

### **Preparing the Burner for Log Set Installation**

The log set requires the burner to be modified. Remove the two screws holding the ember trays in place (see below). Remove the ember trays.

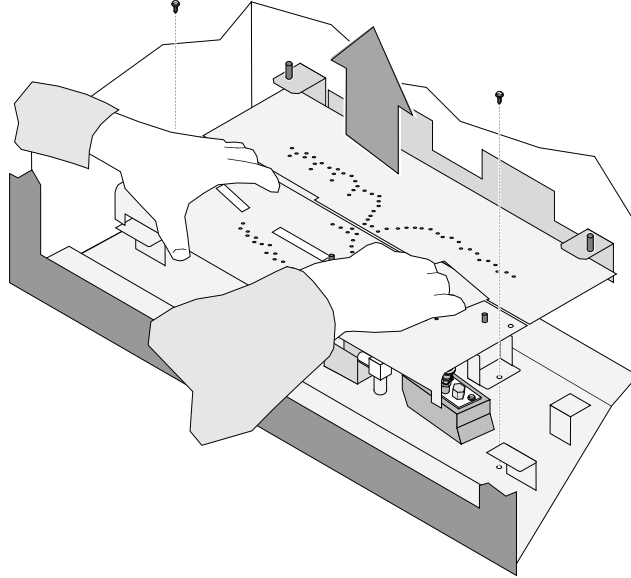




# Driftwood Log Set "B" Installation Instructions (sku 94500572)

## Preparing the Burner

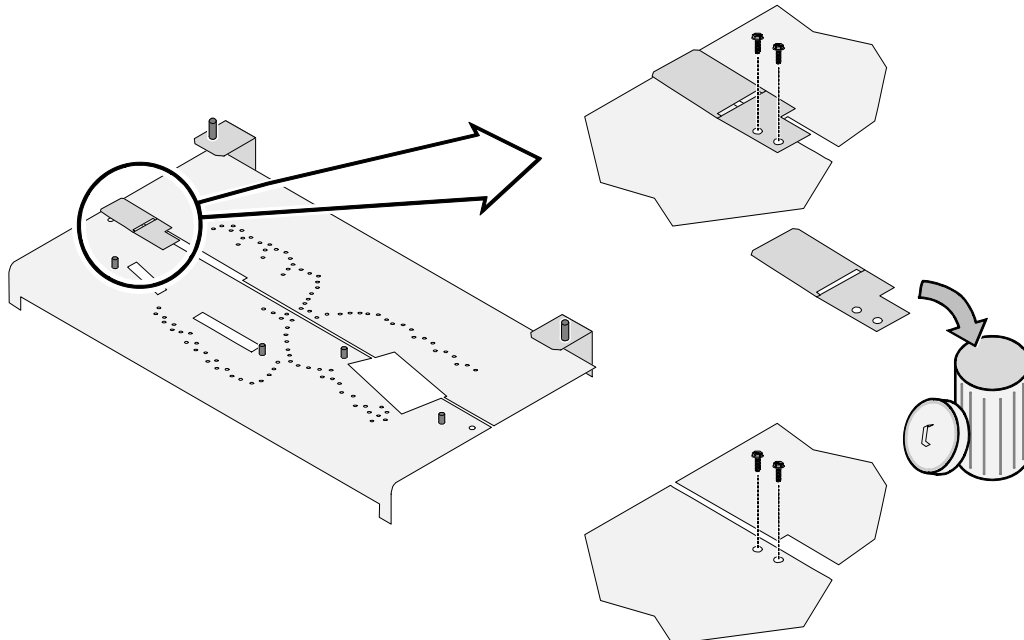
Remove the two screws holding the burner in place (see below). Grasp the burner with both hands and lift it straight up and out of the firebox. Place the burner on a suitable work surface.



Remove and discard the side air deflector. Replace the screws.

**NOTE:** On older burners the deflector is riveted in place. Simply bend the extension repeatedly until it snaps off.

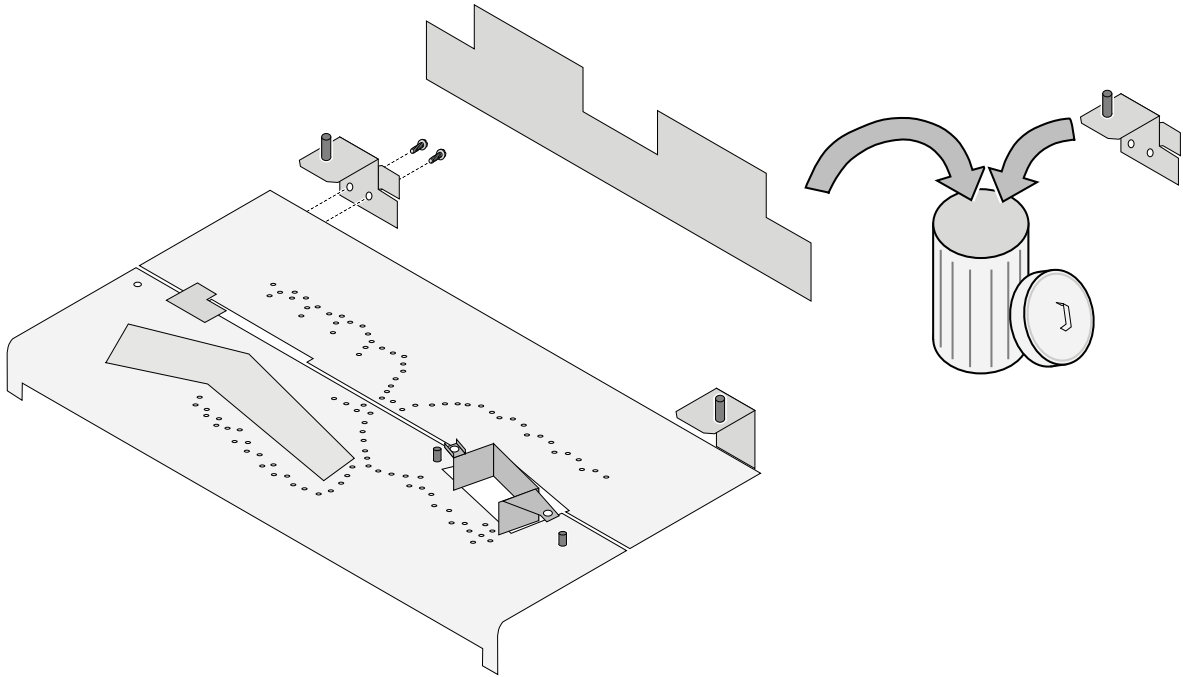
**NOTE:** This applies to the 33 DVI / DVL / Cypress models.





# Driftwood Log Set "B" Installation Instructions (sku 94500572)

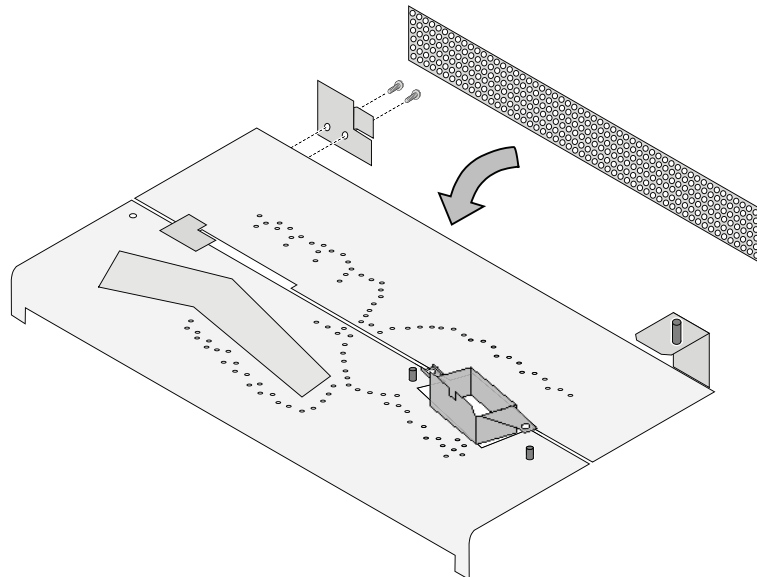
Remove and discard the left rear log support and rear air deflector.



**864 HO NB ONLY:** See the Diamond-Fyre Burner Installation Manual for instructions on air deflector bracket and rear air deflector placement.

## **Cypress on NG Only**

Install the air-deflector bracket and perforated rear air deflector as shown below (make sure perforated air deflector has painted side facing forward). These parts are included with the Cypress.





# Driftwood Log Set "B" Installation Instructions (sku 94500572)

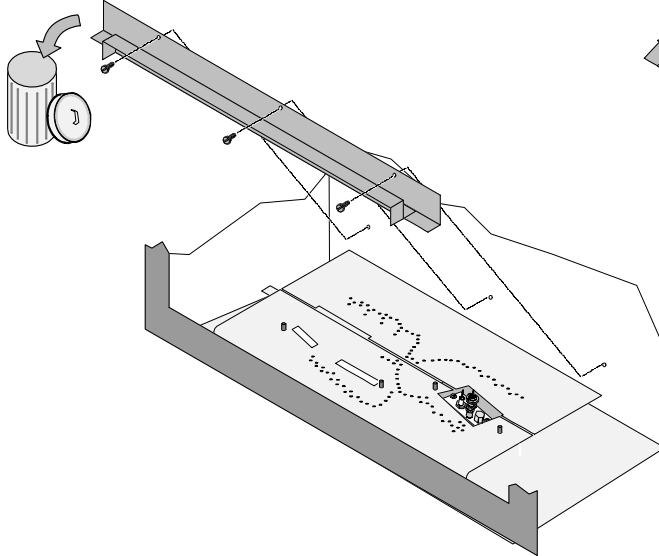
Replace the burner, making sure it is correctly positioned.

## **Cypress Only**

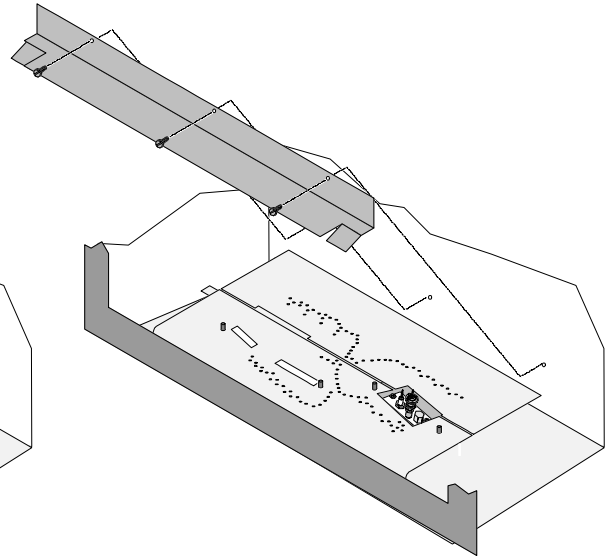
Remove and discard the fireback shelf/high deflector and install the low deflector (included with the Cypress stove).

**FIREBACK NOTE:** If using a fireback, do not remove the low deflector. Place the fireback on the low deflector at the rear of the firebox and secure using the upper clips.

Fireback Shelf/High Deflector



Low Deflector

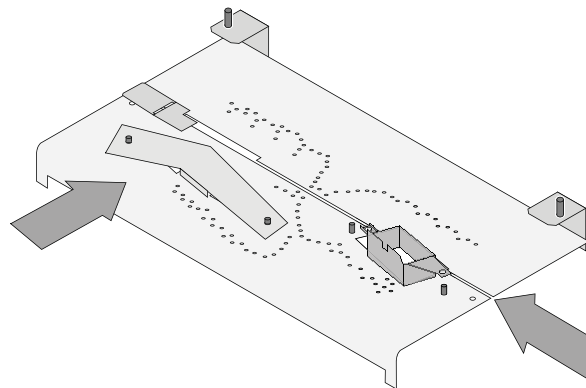


Replace the ember trays and return the stove to the correct configuration.

**NOTE:** The 864 HO NB Diamond-Fyre burner has a unique log plate and pilot shield. See the burner installation manual (sku 96900142).

## **Left Log Plate and Pilot Shield**

**NOTE:** The left log plate and pilot shield are part of the burner assembly but are not mechanically attached. Make sure both components are in place before placing the logs.

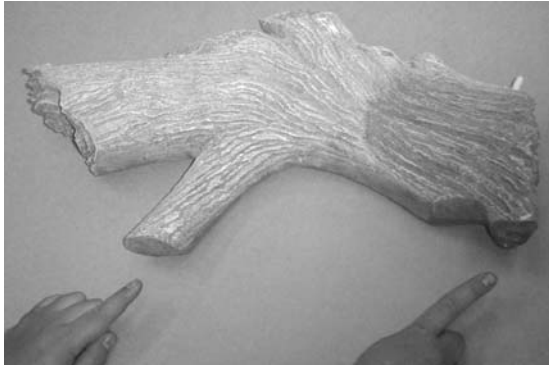




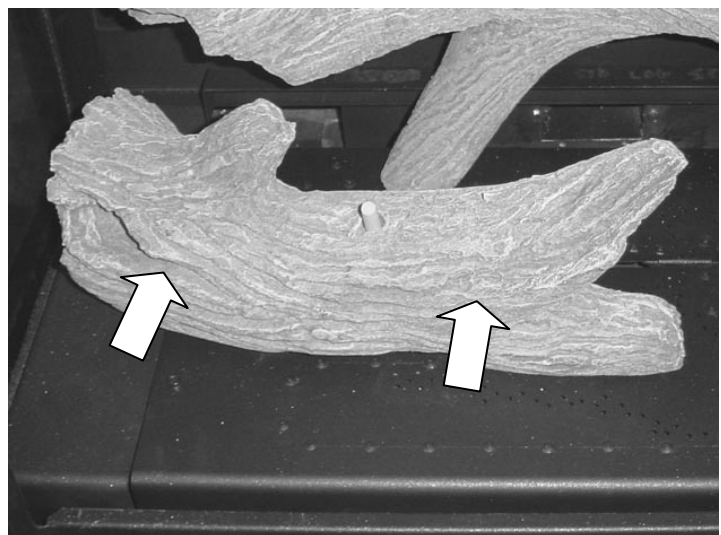
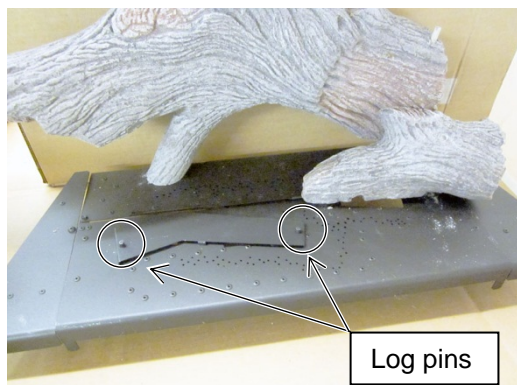
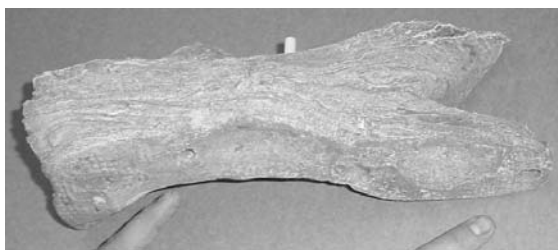
# Driftwood Log Set "B" Installation Instructions (sku 94500572)

## Log Set Installation

Place the rear log so the hole on the right side fits over the pin on rear log shelf. The left side rests on the burner. The log rests against the back wall or fireback.



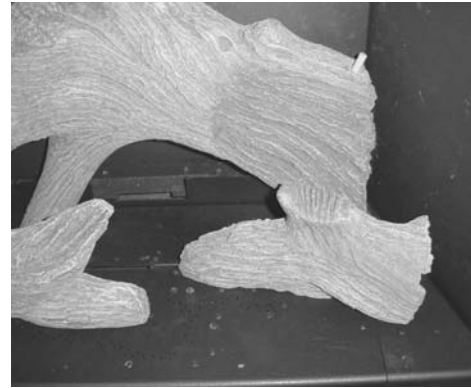
Place the left front log as shown below. Note how the two pins on the burner insert into the holes on the log. Make sure the log is pushed all the way back.





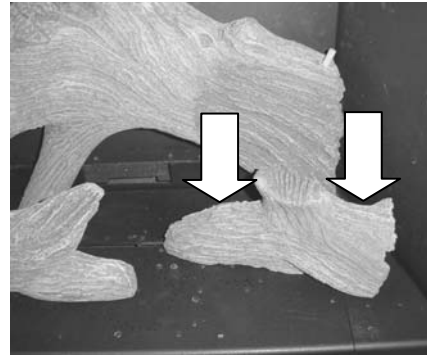
# Driftwood Log Set "B" Installation Instructions (sku 94500572)

Place the right front log as shown below. Note how the two pins on the burner insert into the holes on the log.



## **Special Instructions for Pilot Shield**

Most units have a pilot shield that contacts the bottom of the front right log (older 33 DVI's do not).



Place the log in place and press down on it firmly until the log sits flat (this may indent the bottom of the log). Be careful to not damage the log or press too firmly. When in place, the log should be spaced approximately 3/8" above the burner surface (see photo below). Make sure the pilot is visible and is able to light the burner.







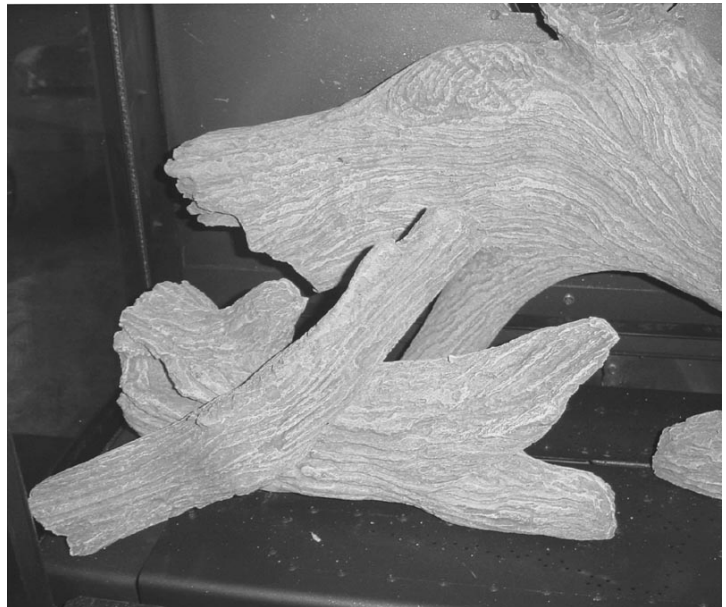
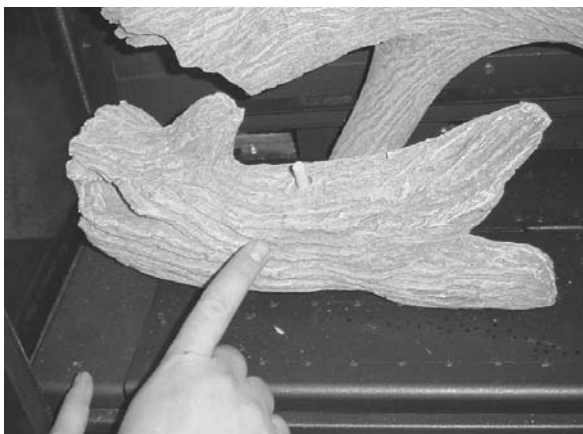
TRAVIS INDUSTRIES  
HOUSE OF FIRE

## Driftwood Log Set "B" Installation Instructions (sku 94500572)

Place the right twig as shown below. Note how the hole on the twig inserts over the pin on the rear log and rests on the flat portion of the front right log.



Place the left twig as shown below. Note how the hole on the twig inserts over the pin on the left front log and rests on the left ember tray.



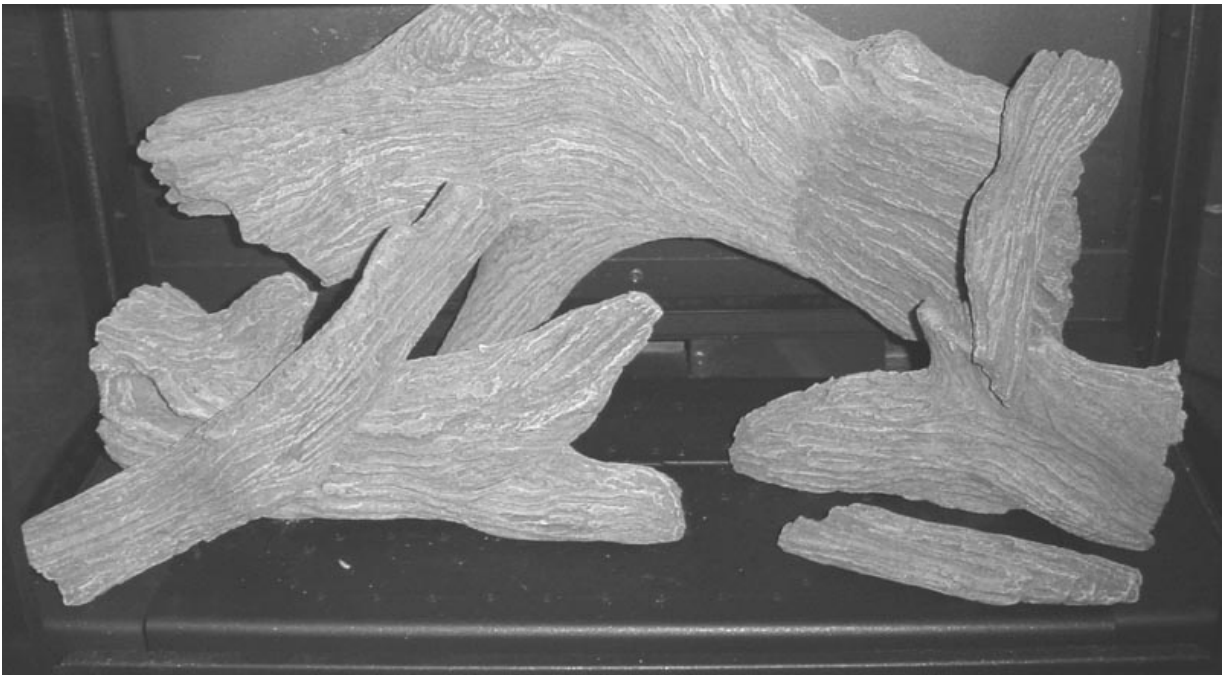
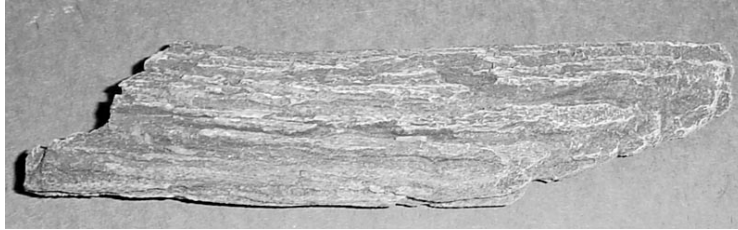


TRAVIS INDUSTRIES  
HOUSE OF FIRE

## Driftwood Log Set "B" Installation Instructions (sku 94500572)

---

Place the ember chunk on the burner as shown below. Make sure the ember chunk does not cover any of the burner holes.







# Driftwood Log Set "B"

## Installation Instructions (sku 94500572)

### Crushed Glass Installation



**It is better to use too little glass than too much.** Excessive glass, especially when using propane (LP), will lead to sooting. Place the glass as thinly as possible over the burner ports for optimum burner performance. Do not place glass over the pilot assembly.

### **Crushed Glass Part Numbers (1/4" American Fireglass crushed glass)**

Three colors of glass are available from Travis Industries (10 lbs. – shipped in four 2.5lb. bags):

- Platinum (94500580)
- Reflective Bronze (94500581)
- Cobalt (94500582)

### **Glass Quantity**

Use the following amount of glass based on the model being used:

MODEL	QUANTITY USED		
	Bags	Rounded Cups	Rounded ml
33 DVI/DVL GSR NB w Dancing-Fyre Burner	0.5	1-1/4	300
Cypress	0.7	1-3/4	420
864 HO NB with Diamond-Fyre Burner	2	5	1200

The glass is supplied from the manufacturer in 2.5 lb. bags. Depending upon appliance, you may need to measure glass quantity. Use a liquid measuring cup to accurately determine the amount of glass used.

**1 Level Cup (8 fl. oz.) (240ml) = 0.95 lbs.**

**So...1 Slightly Rounded Cup = 1 lb.**





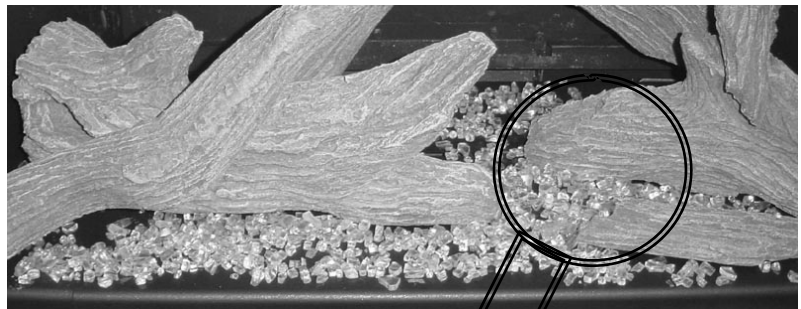
# Driftwood Log Set "B" Installation Instructions (sku 94500572)

## Glass Placement

Pour the crushed glass onto the burner in a thin, uniform layer.



**WARNING:** Make sure the glass is a maximum 1 layer thick (NG can be up to 2 layers). If the glass is too thick it will impair burner performance and create soot.



**WARNING:** Make sure the pilot is not obscured with glass. Clear away glass, if necessary, to insure the pilot flame lights the burner quickly.

